

CONNECTED LIGHTING

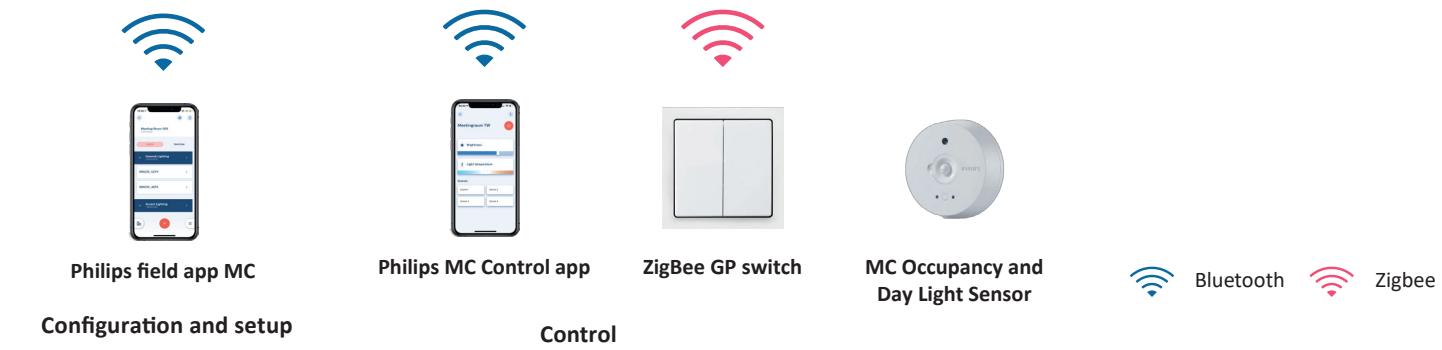
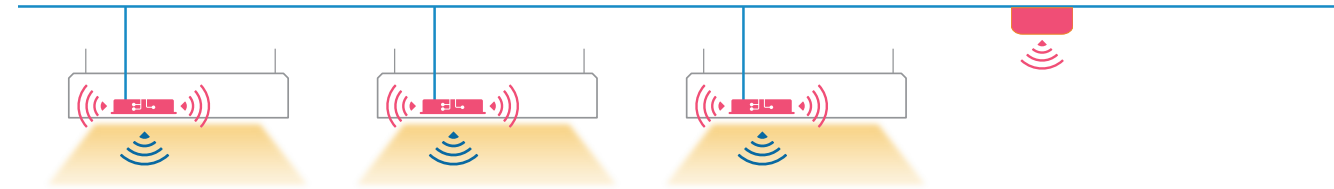
MasterConnect

MasterConnect is simple, cost-effective wireless system enabling energy savings and comfort lighting experience.

MasterConnect components are available in all our products on request

System features:

- App-based setup
- App-based configuration
- App-based end user control
- Manual control - Wireless dimming & Scene control
- Room based sensing: Occupancy detection, daylight harvesting



HEALTHY LIGHTING

BioUp technology is available in our selected products.

BioUp LED

BioUp LED modules are the best way to increase melanopic light levels and achieve WELL points for Circadian Lighting Design (L03) BioUp technology enhances the LED spectrum with cyan light. This increases the biological impact of the light. With BioUp the melanopic-DER is 42% higher compared to standard LED spectrum. There is no change in visual color impression and visual light output (4000K, CRI>80, R9>50).

Melanopic DER

The melanopic daylight efficacy ratio is a spectral metric of the biological effect of artificial light source compared to daylight (6500K). The melanopic-DER of a reference daylight spectrum is 1. Typically, artificial lighting has a lower biological effect than daylight, the melanopic-DER being below 1.

SELECTED LUMINAIRES ARE AVAILABLE WITH CES OR CED LED MODULES

CYAN ENHANCED STATIC (CES)

- natural, healthy light without changing the colour temperature
- spectrum of light with a conquered wave at the level of 480nm thanks to the use of Cyan diodes
- high value of the melanopic light index DER 0.86
- high-quality, comfortable light with a colour temperature of 4200 K, CRI>80, R9*>50

CYAN ENHANCED DYNAMIC (CED)

- natural, healthy light with variable colour temperature
- spectrum of light with a conquered wave at the level of 480nm thanks to the use of Cyan diodes
- above-average value of the melanopic light index up to the value of DER 0.99 at the colour temperature of 5000 K achieved by changing the colour temperature (tunable white) from 3000 K to 5000 K
- High-quality, comfortable light with a colour temperature from 3000 K to 5000 K, CRI>80, R9*>58



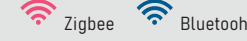
LENTE

New premium class lighting

IMPERIAL SP. Z O.O.
78-200 BIALOGARD, POLAND
VAT PL 672-209-74-37
WWW.IMPERIAL.PL
OFFICE@IMPERIAL.PL



Energy saving MasterConnect wireless lighting control system with daylight and movement detection technology on request.



LENTE

Recessed LED luminaire with UGR<19 for mounting in suspended ceiling.

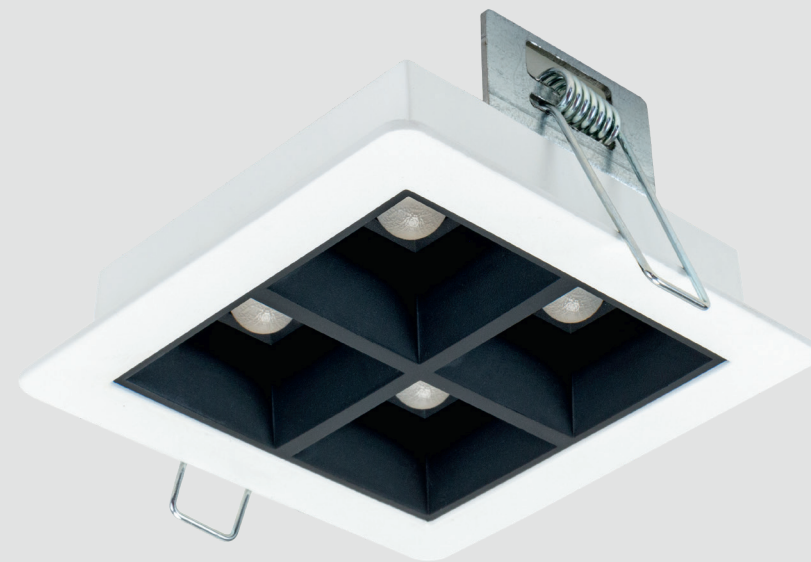
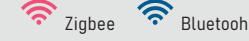
Body material: Steel and aluminium
Colour: Standard White RAL 9016, other RAL colours on request
LED module: Signify (Philips) or equivalent LED module included
Colour temperature: 3000K/4000K/Tunable White
Colour Rendering Index (CRI): >80 in standard, >90 on request
Driver: EVG/DALI/DT8 on request
Emergency unit: on request
Movement sensor: on request
Daylight control sensor: on request
Lighting direction: Direct lighting
Reflector type: Selection of lenses
Light distribution: Symmetric/asymmetric



Please scan QR code for more details.



Energy saving MasterConnect wireless lighting control system with daylight and movement detection technology on request.



LENTE SQ R

Recessed LED luminaire with UGR<19 for mounting in suspended ceiling.

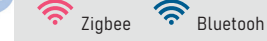
Body material: Steel and aluminium
Colour: Standard White RAL 9016, other RAL colours on request
LED module: Signify (Philips) or equivalent LED module included
Colour temperature: 3000K/4000K/Tunable White
Colour Rendering Index (CRI): >80 in standard, >90 on request
Driver: EVG/DALI/DT8 on request
Emergency unit: on request
Movement sensor: on request
Daylight control sensor: on request
Lighting direction: Direct lighting
Reflector type: Selection of lenses
Light distribution: Symmetric/asymmetric



Please scan QR code for more details.



Energy saving MasterConnect wireless lighting control system with daylight and movement detection technology on request.



PROLINE 45 PREMIUM

Surface mounted or suspended LED luminaire with UGR<19. Bespoke lengths of lighting lines available on request.

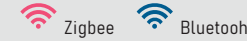
Body material: Steel and aluminium
Colour: Standard White RAL 9016, other RAL colours on request
LED module: Signify (Philips) or equivalent LED module included
Colour temperature: 3000K/4000K/Tunable White
Colour Rendering Index (CRI): >80 in standard, >90 on request
Driver: EVG/DALI/DT8 on request
Emergency unit: on request
Movement sensor: on request
Daylight control sensor: on request
Lighting direction: Direct or direct/indirect
Reflector type: Selection of lenses
Light distribution: Symmetric/asymmetric



Please scan QR code for more details.



Energy saving MasterConnect wireless lighting control system with daylight and movement detection technology on request.



LENTE SQ

Surface mounted LED luminaire with UGR<19.

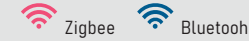
Body material: Steel and aluminium
Colour: Standard White RAL 9016, other RAL colours on request
LED module: Signify (Philips) or equivalent LED module included
Colour temperature: 3000K/4000K
Colour Rendering Index (CRI): >80 in standard, >90 on request
Driver: EVG/DALI on request
Emergency unit: on request
Movement sensor: on request
Daylight control sensor: on request
Lighting direction: Direct lighting
Reflector type: Selection of lenses
Light distribution: Symmetric/asymmetric



Please scan QR code for more details.



Energy saving MasterConnect wireless lighting control system with daylight and movement detection technology on request.



PROLINE 45 REC PREMIUM

Recessed LED luminaire with UGR<19. Bespoke lengths of lighting lines available on request.

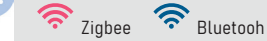
Body material: Steel and aluminium
Colour: Standard White RAL 9016, other RAL colours on request
LED module: Signify (Philips) or equivalent LED module included
Colour temperature: 3000K/4000K/Tunable White
Colour Rendering Index (CRI): >80 in standard, >90 on request
Driver: EVG/DALI/DT8 on request
Emergency unit: on request
Movement sensor: on request
Daylight control sensor: on request
Lighting direction: Direct lighting
Reflector type: Selection of lenses
Light distribution: Symmetric/asymmetric



Please scan QR code for more details.



Energy saving MasterConnect wireless lighting control system with daylight and movement detection technology on request.



FLATO 2D

Recessed LED luminaire with UGR<19 for installation in modular suspended ceilings.

Body material: Steel and aluminium
Colour: Standard White RAL 9016, other RAL colours on request
LED module: Signify (Philips) or equivalent LED module included
Colour temperature: 3000K/4000K/Tunable White
Colour Rendering Index (CRI): >80 in standard, >90 on request
Driver: EVG/DALI/DT8 on request
Emergency unit: on request
Movement sensor: on request
Daylight control sensor: on request
Lighting direction: Direct
Reflector type: Selection of lenses
Light distribution: Symmetric/asymmetric



Please scan QR code for more details.